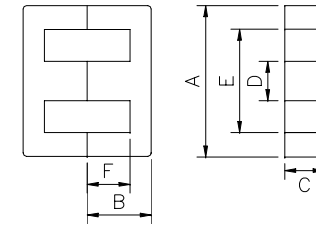
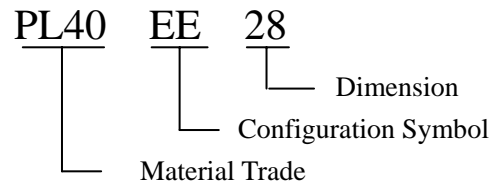
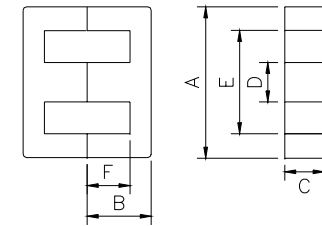
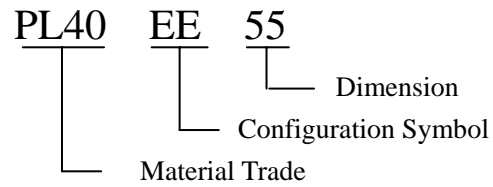


Mn-Zn Ferrite EE Cores



Ordering code	Dimensions (mm)						Effective Parameter					AL ($\pm 25\%$) (1kHz.50mV.HP4284A)					
	A	B	C	D	E min	F	Cl(mm ⁻¹)	Ae(mm ²)	Le(mm ³)	Ve(mm ³)	We(g)	PB32	PL30	PL40	PL44	H075	H100
EE5.3	5.25±0.15	2.65±0.10	1.95±0.15	1.35±0.10	3.85±0.10	2.0±0.1	6.90	1.8	12.6	23.0	0.1	280	260	250	230	590	640
EE6.2	6.2± _{0.2} ^{0.3}	2.8±0.2	1.90±0.15	1.3±0.1	3.7±0.2	1.9±0.1	3.87	3.1	12.1	37.7	0.2	340	310	300	290	720	780
EE8.3	8.3± _{0.2} ^{0.3}	4.0±0.15	3.80±0.15	1.85±0.15	6.1	3.0±0.1	2.54	7.6	19.3	147	0.7	720	640	620	570	1500	1700
EE10.2	10.2±0.3	5.5±0.2	4.75±0.15	2.45±0.15	7.9	4.20±0.15	2.26	11.5	26.1	301	1.4	940	820	790	720	2000	2300
EE10.2-8.0	10.2±0.3	4.0± ₀ ^{0.2}	4.75±0.15	2.45±0.15	7.8	2.70± ₀ ^{0.15}	1.70	11.8	20.1	237	1.1	970	850	810	750	2100	2300
EE12.6	12.6±0.3	4.25±0.20	6.0±0.2	3.0±0.2	9.80	3.00±0.15	1.41	16.3	22.9	374	1.8	1300	1200	1100	1000	2900	3200
EE13	13.1±0.3	6.15±0.25	5.9±0.2	2.75±0.15	10.1.	4.85±0.15	1.91	16.2	31.0	502	2.4	1200	1100	1000	920	2700	3100
EE16	16.1±0.3	7.45±0.25	4.8±0.2	4.0±0.2	11.8	5.45±0.15	1.83	19.7	36.0	707	3.4	1300	1100	1100	970	2800	3300
EE19	19.1±0.3	8.15±0.25	5.0±0.2	4.6±0.2	14.3	5.75±0.15	1.70	23.7	40.1	949	4.6	1400	1200	1200	1100	3200	3700
EE20	20.0±0.3	10.6±0.3	4.8±0.2	4.8±0.2	12.3	6.6±0.2	1.45	29.5	42.8	1260	6.0	1500-	1300	1200	1100	3400	4000
EE22	22.0±0.4	9.2±0.3	5.75±0.25	5.75±0.25	15.6	5.35±0.15	1.11	37.5	41.6	1560	7.5	2500	2100	2000	1800	5500	6400
EE2520	25.4±0.5	10.0±0.3	6.35±0.25	6.35±0.25	19.0	7.0±0.2	1.27	39.6	50.3	1990	9.6	2100	1800	1700	1500	4700	5500
EE2820	28.0±0.5	10.2±0.3	10.6±0.3	7.2±0.3	19.2	6.4±0.2	0.6	82.3	49.5	4080	19.6	4400	3800	3500	3200	9800	11700
EE30	30.1±0.5	14.8±0.3	7.05±0.25	6.95±0.25	19.5.	9.85±0.25	1.07	60.3	64.4	3880	18.6	2700	2200	2100	1900	6000	7200
EE3027	30.1±0.5	13.5±0.3	10.7±0.3	10.7±0.3	20.5	8.0±0.2	0.53	111.0	58.2	6450	31.0	5400	4500	4200	3800	12000	14300
EE3329	33.0±0.5	14.3±0.3	12.7±0.3	9.7±0.3	24.0	9.7±0.2	0.57	118.0	67.6	7970	38.3	4900	4000	3800	3400	10900	13200
EE35	35.0±0.6	14.6±0.3	9.2±0.3	9.4±0.3	24.8	9.2±0.2	0.73	92.8	68.2	6330	30.4	3700	3000	2900	2600	8200	10000
EE40	40.0±0.6	17.5±0.4	11.7±0.3	11.7±0.3	27.5	10.5±0.3	0.68	146.0	99.9	14600	70.1	4600	3700	2500	3100	10300	12800

Mn-Zn Ferrite EE Cores



Ordering code	Dimensions (mm)						Effective Parameter					AL (±25%) (1kHz.50mV.HP4284A)	
	A	B	C	D	E min	F	C1(mm ⁻¹)	Ae(mm ²)	Le(mm)	Ve(mm ³)	We(g)	PL40	PL44
EE55	55.0± _{0.9} ^{1.2}	27.8± _{0.6} ⁰	21.0± _{0.6} ⁰	17.2± _{0.5} ⁰	37.5	18.5± ₀ ^{0.8}	0.34	354	120	42500	216	6500	5600
EE65	65.0± _{2.5} ⁰	31.2± _{0.5} ⁰	25.0±0.3	19.65±0.35	43.0	20.8± ₀ ^{0.5}	0.28	500	139	69700	350	7800	6800
EE70	70.0± _{1.0} ^{1.2}	35.5± _{0.5} ⁰	25.0± _{0.5} ⁰	17.0± _{0.5} ⁰	49.5	24.8± ₀ ^{0.5}	0.34	461	159	73200	370	6500	5600
EE85*26.5	85.0± _{2.5} ⁰	43.0± _{0.7} ⁰	26.5±0.5	27.2± _{0.6} ⁰	55.0	28.7± ₀ ^{1.0}	0.26	714	188	134500	675	8300	7200
EE85*31.5	85.0± _{2.5} ⁰	43.0± _{0.7} ⁰	31.5±0.5	27.2± _{0.6} ⁰	55.0	28.7± ₀ ^{1.0}	0.22	859	189	162000	810	10000	8700
EE110	110.0± _{2.0} ^{1.0}	56.0± _{1.0} ⁰	36.0±0.5	36.0±1.0	74.2	37.2± ₀ ^{1.4}	0.19	1280	244	32100	1560	11500	10000
EE118	118.0± _{2.5} ^{1.5}	86.5± _{0.5} ^{0.75}	35.0±0.7	35.0±0.5	82.0	69.0±0.5	0.33	1240	407	504680	2290	7000	6090
EE160	162.0±2.5	83.0±1.0	20.0±1.5	40.0±2.0	120.0	64.0±1.0	0.50	1600	398	636800	3200	9000	7800
EE185	185.0±3.5	77.0±1.5	27.5±1.0	53.0±1.0	128.0	50.0±1.5	0.24	1488	370	550500	2800	1200	1040