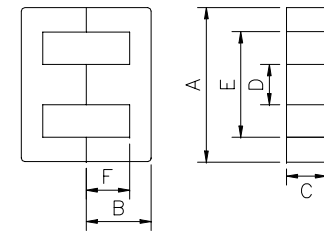
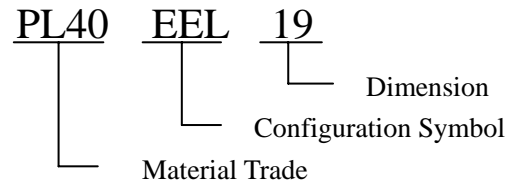
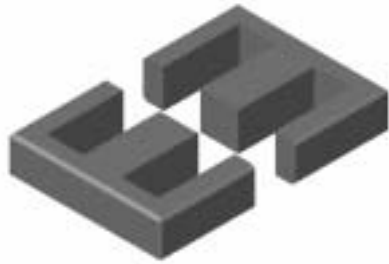


Mn-Zn Ferrite EEL Cores



Ordering code	Dimensions (mm)						Effective Parameter					AL ($\pm 25\%$) (1kHz.50mV.HP4284A)				
	A	B	C	D	E min	F	Cl(mm ⁻¹)	Ae(mm ²)	Le(mm)	Ve(mm ³)	We(g)	PL30	PL40	PL44	H075	H100
EEL10.2	10.2±0.3	10.5±0.3	5.5±0.2	2.45±0.15	7.8	9.2±0.2	3.42	13.5	46.1	621	3.0	920	860	760	2500	3100
EEL12.6	12.6±0.3	7.5±0.3	4.85±0.25	2.4±0.2	9.1	5.0±0.2	2.05	15.0	30.7	459	2.2	940	900	820	2400	2700
EEL16	16.1±0.3	12.4±0.3	4.8±0.2	4.0±0.2	11.8	10.25±0.25	2.77	20.0	55.4	1110	5.3	800	750	670	2100	2500
EEL19	19.1±0.4	13.8±0.3	5.0±0.2	4.6±0.2	14.0	11.4±0.3	2.59	24.1	62.4	1500	7.2	900	840	750	2400	2900
EEL22	22.3±0.4	14.6±0.3	5.75±0.25	5.75±0.25	15.6	10.8±0.2	1.71	36.9	63.3	2340	11.3	1300	1200	1100	3500	4200
EEL25	25.4±0.5	16.0±0.3	6.35±0.25	6.35±0.25	18.55	13.0±0.3	1.81	40.9	73.9	3020	14.5	1300	1200	1100	3600	4300