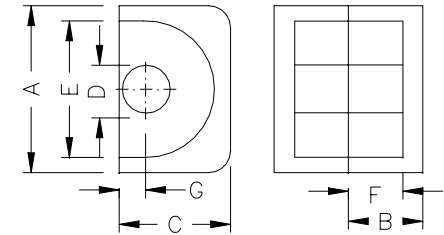
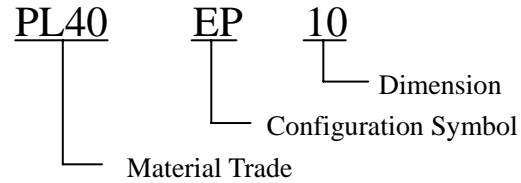


Mn-Zn Ferrite EP Cores



Ordering code	Dimensions (mm)							Effective Parameter					AL (±25%) (1kHz.50mV.HP4284A)		
	A	B	C	D	E	F	G	Cl(mm ⁻¹)	Ae(mm ²)	Le(mm)	Ve(mm ³)	We(g)	PL40	PL44	H100
EP7	9.2±0.2	3.75± _{0.15} ⁰	6.5± _{0.3} ⁰	3.4± _{0.2} ⁰	7.4±0.2	2.5± ₀ ^{0.2}	1.8max	1.52	10.3	15.7	162	1.4	830min	820	5050
EP10	11.5±0.3	5.2± _{0.2} ⁰	7.85± _{0.40} ⁰	3.45± _{0.30} ⁰	9.4±0.2	3.6± ₀ ^{0.2}	1.95max	1.70	11.3	19.2	217	2.8	980min	810	3480min
EP13	12.5±0.3	6.50± _{0.15} ⁰	9.0± _{0.4} ⁰	4.5± _{0.3} ⁰	10.0±0.3	4.5± ₀ ^{0.2}	2.5max	1.24	19.5	24.2	472	5.1	1300	1200	7200
EP17	18.0±0.4	8.50± _{0.25} ⁰	11.25± _{0.50} ⁰	5.85± _{0.35} ⁰	12.0±0.4	5.5± ₀ ^{0.3}	3.45max	0.84	33.9	28.5	966	11.8	2100	1900	11000
EP20	24.0±0.5	10.8± _{0.3} ⁰	15.3± _{0.7} ⁰	9.0± _{0.4} ⁰	16.5±0.4	7.0± ₀ ^{0.3}	4.7max	0.51	78.0	39.8	312	27.6	4500	3500	18000