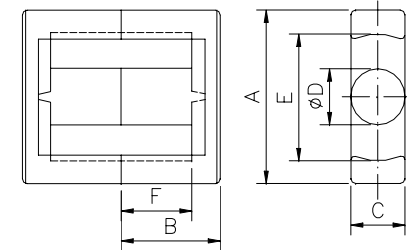
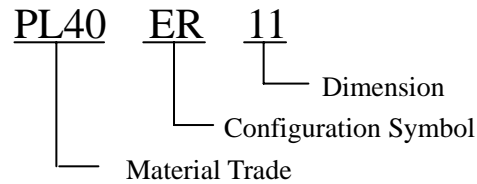


Mn-Zn Ferrite ER Cores



Ordering code	Dimensions (mm)						Effective Parameter					AL ($\pm 25\%$) (1kHz.50mV.HP4284A)	
	A	B	C	D	E min	F	C1(mm ⁻¹)	Ae(mm ²)	Le(mm)	Ve(mm ³)	We(g)	PL40	PL44
ER7.5	7.50±0.15	2.50±0.15	4.0±0.1	2.6±0.1	6.2±0.1	1.72± ^{0.10} / _{0.05}	2.17	6.05	13.1	79.3	0.4	560	530
ER9.5*3.95	9.35±0.25	1.98±0.12	4.6±0.1	3.0±0.1	7.70± ^{0.30} / _{0.05}	1.17± ^{0.10} / _{0.05}	1.60	7.75	12.4	95.9	0.5	650	610
ER9.5/5	9.35±0.25	2.45±0.15	4.9±0.1	3.4±0.1	7.0	1.68±0.12	1.42	9.27	13.1	122	0.6	750	710
ER11/3.9	10.83±0.22	1.93±0.07	5.9±0.1	4.13±0.18	7.9	1.05±0.12	0.89	13.0	11.5	149	0.7	1000min	1000
ER11/5	10.83±0.22	2.45±0.15	5.9±0.1	4.13±0.18	7.9	1.58±0.12	1.02	13.2	13.4	177	0.8	1280	980
ER13.5	13.5±0.3	5.6±0.1	8.4± ⁰ / _{0.2}	6.0± ⁰ / _{0.2}	9.9±0.2	3.8± ^{0.2} / ₀	0.78	32.2	25.0	804	3.9	2100	2000
ER14.5/6	14.5±0.3	2.95±0.15	6.70±0.15	4.70±0.15	11.8±0.2	1.65±0.15	1.01	18.3	18.6	341	1.6	1400	1300
ER2828	28.8±0.5	14.0±0.3	11.3±0.3	9.90±0.25	21.2	9.65±0.25	0.72	88.1	63.2	5570	26.7	2900	2600
ERL2834	28.8±0.5	17.0±0.3	11.3±0.3	9.9±0.25	21.4	12.6±0.3	0.86	87.2	75.1	6550	31.4	2500	2200
ERL3543	35.5±0.5	21.5±0.5	11.3±0.3	11.3±0.3	26.0	15.5±0.4	0.83	113.0	93.8	10600	50.9	2800	2500