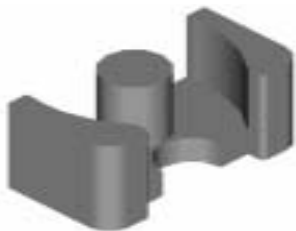
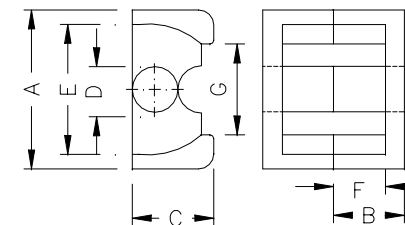


Mn-Zn Ferrite LP Cores



PL40 **LP** **23/8**
 Material Trade Configuration Symbol Dimension



Ordering code	Dimensions (mm)							Effective Parameter					AL ($\pm 25\%$)(1kHz.50mV.HP4284A)	
	A	B	C	D	E	F	G	Cl(mm ⁻¹)	Ae(mm ²)	Le(mm)	Ve(mm ³)	We(g)	PL40	PL44
LP22/13	25.0±0.4	11.2±0.1	12.9±0.3	8.6±0.2	19.0±0.3	8.20±0.15	13.5±0.5	0.72	67.9	49.0	3277	15.7	2900	2600
LP23/8	16.5±0.3	16.7±0.1	8.7±0.2	5.7±0.1	12.5±0.3	8.7±0.1	9.0±0.5	1.41	31.3	44.1	1377	6.6	1400	1300
LP32/13	25.0±0.4	15.9±0.1	12.9±0.3	8.6±0.2	19.0±0.3	12.05±0.15	13.5±0.5	0.91	70.3	64.0	4498	21.6	2500	2200