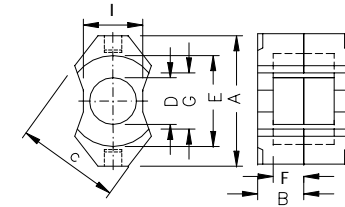
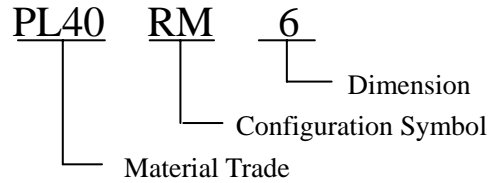
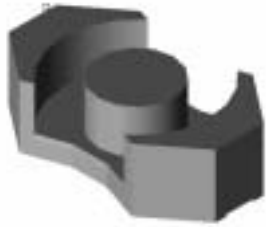


Mn-Zn Ferrite RM Cores



Ordering code	Dimensions (mm)								Effective Parameter					AL ($\pm 25\%$) (1kHz.50mV.HP4284A)		
	A	B	C	ϕD	E	F	Gmin	I	Cl(mm ⁻¹)	Ae(mm ²)	Le(mm)	Ve(mm ³)	We(g)	PL40	PL44	H100
RM4	10.8 \pm 0.2	5.20 \pm 0.15	9.63 \pm 0.17	3.8 \pm 0.1	8.15 \pm 0.25	3.6 \pm 0.1	5.8	4.45 \pm 0.15	1.62	14.0	22.7	318	1.7	990	910	2900min
RM5	14.3 \pm 0.3	5.20 \pm 0.15	12.05 \pm 0.25	4.8 \pm 0.1	10.4 \pm 0.2	3.25 \pm 0.15	6.0	6.6 \pm 0.2	0.94	23.7	22.4	530	3.0	1700	1600	5400min
RM6	17.6 \pm 0.4	6.20 \pm 0.15	14.4 \pm 0.3	6.3 \pm 0.1	12.65 \pm 0.25	4.1 \pm 0.1	8.4	8.0 \pm 0.2	0.78	36.6	28.6	1050	5.5	2300	2100	6960min
RM8	22.75 \pm 0.45	8.20 \pm 0.15	19.35 \pm 0.35	8.4 \pm 0.2	17.3 \pm 0.3	5.5 \pm 0.1	9.8	10.8 \pm 0.2	0.59	64.0	38.0	2430	13.0	3300	3000	8480min
RM10	27.85 \pm 0.55	9.30 \pm 0.15	24.15 \pm 0.55	10.7 \pm 0.2	21.65 \pm 0.45	6.35 \pm 0.15	11.3	13.25 \pm 0.25	0.45	98.0	44.0	4310	23.0	4500	4100	18600
RM12	36.75 \pm 0.65	11.75 \pm 0.15	29.25 \pm 0.55	12.6 \pm 0.2	25.5 \pm 0.5	8.55 \pm 0.15	12.9	16.0 \pm 0.3	0.40	140.0	56.9	7960	42.0	5500	4900	18100min
RM14	42.2 \pm _{1.0} ⁰	14.5 \pm _{0.2} ⁰	34.7 \pm _{1.0} ⁰	15.0 \pm _{0.5} ⁰	29.0 \pm ₀ ^{1.0}	10.4 \pm ₀ ^{0.3}			0.40	178.0	71.0	12600	65.8	5000min		