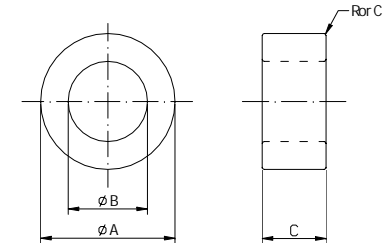
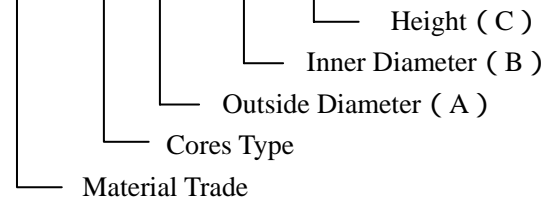


# Mn-Zn Ferrite T Cores



H100 T 22×14×8



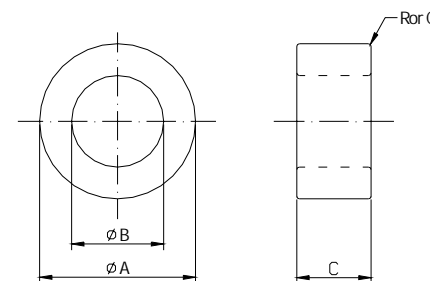
Ordering code	Dimensions (mm)			Effective Parameter					AL (±25%) (1kHz.50mV.HP4284A)				
	ΦA	ΦB	C	Cl(mm <sup>-1</sup> )	Ae(mm <sup>2</sup> )	Le(mm)	Ve(mm <sup>3</sup> )	We(g)	H043	H055	H065	H075	H100
T2.54×1.27×0.76	2.54±0.15	1.27±0.15	0.76±0.15	11.90	0.46	5.53	2.56	0.01	450	580	680	790	1100
T2.54×1.27×1	2.54±0.15	1.27±0.15	1.00±0.15	9.06	0.61	5.53	3.37	0.02	600	760	900	1000	1400
T2.54×1.27×1.27	2.54±0.15	1.27±0.15	1.27±0.15	7.13	0.78	5.53	4.28	0.02	760	970	1100	1300	1800
T2.54×1.27×1.78	2.54±0.15	1.27±0.15	1.78±0.15	5.09	1.09	5.53	6.0	0.03	1100	1400	1600	1900	2500
T2.54×1.5×1	2.54±0.15	1.50±0.15	1.00±0.15	11.9	0.51	6.06	3.08	0.01	450	580	680	790	1100
T2.54×1.5×1.27	2.54±0.15	1.50±0.15	1.27±0.15	9.93	0.65	6.06	3.91	0.02	580	740	870	1000	1300
T3.05×1.27×0.76	3.05±0.15	1.27±0.15	0.76±0.15	9.43	0.64	6.0	3.80	0.02	570	730	870	1000	1300
T3.05×1.27×0.86	3.05±0.15	1.27±0.15	0.86±0.15	8.33	0.72	6.0	4.30	0.02	650	830	980	1100	1500
T3.05×1.27×1	3.05±0.15	1.27±0.15	1.00±0.15	7.17	0.84	6.0	5.0	0.02	750	960	1100	1300	1800
T3.05×1.27×1.27	3.05±0.15	1.27±0.15	1.27±0.15	5.64	1.06	6.0	6.35	0.03	960	1200	1400	1700	2200
T3.05×1.78×1.52	3.05±0.15	1.78±0.15	1.52±0.15	7.67	0.94	7.23	6.81	0.03	700	900	1100	1200	1600
T3.43×1.78×0.86	3.43±0.15	1.78±0.15	0.86±0.15	11.10	0.69	7.62	5.22	0.03	490	620	730	850	1100
T3.43×1.78×1.27	3.43±0.15	1.78±0.15	1.27±0.15	7.54	1.01	7.62	7.70	0.04	710	920	1100	1200	1700
T3.43×1.78×2.06	3.43±0.15	1.78±0.15	2.06±0.15	4.65	1.64	7.62	12.50	0.06	1200	1500	1800	2000	2700
T3.43×1.78×2.54	3.43±0.15	1.78±0.15	2.54±0.15	3.77	2.02	7.62	15.40	0.07	1400	1800	2200	2500	3300
T3.5×1.3×1	3.50±0.15	1.30±0.15	1.00±0.15	6.34	1.01	6.43	6.52	0.03	850	1100	1300	1500	2000
T3.5×1.3×1.27	3.50±0.15	1.30±0.15	1.27±0.15	4.99	1.29	6.43	8.29	0.04	1100	1400	1600	1900	2500

# Mn-Zn Ferrite T Cores



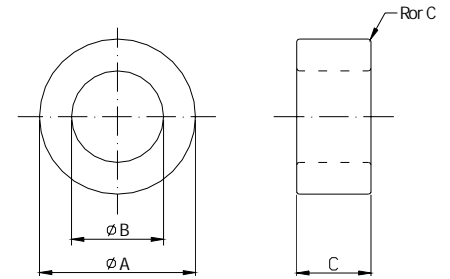
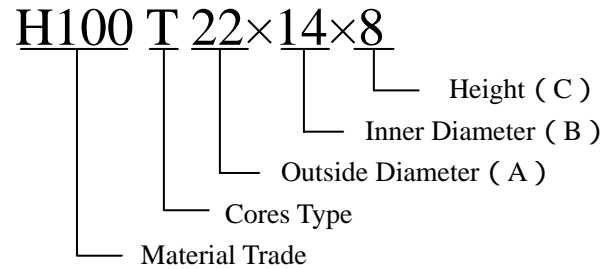
**H100 T 22×14×8**

Material Trade      Cores Type      Outside Diameter ( A )      Inner Diameter ( B )      Height ( C )



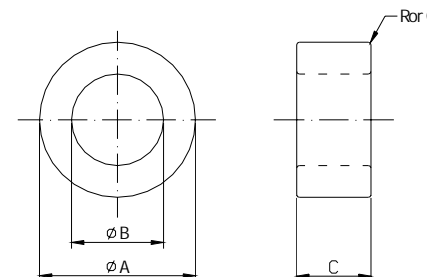
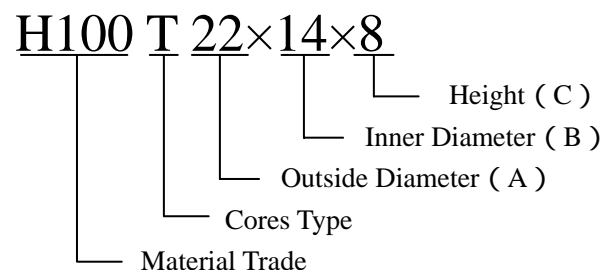
Ordering code	Dimensions (mm)			Effective Parameter					AL ( $\pm 25\%$ ) (1kHz.50mV.HP4284A)				
	$\Phi A$	$\Phi B$	C	Cl(mm <sup>-1</sup> )	Ae(mm <sup>2</sup> )	Le(mm)	Ve(mm <sup>3</sup> )	We(g)	H043	H055	H065	H075	H100
T3.5×1.3×2.54	3.50±0.15	1.30±0.15	2.54±0.15	2.50	2.58	6.43	16.60	0.08	2200	2800	3300	3800	5000
T3.94×1.78×1	3.94±0.15	1.78±0.15	1.00±0.15	7.90	1.02	8.10	8.30	0.04	680	870	1000	1200	1600
T3.94×1.78×1.27	3.94±0.15	1.78±0.15	1.27±0.15	6.22	1.30	8.10	10.50	0.05	870	1100	1300	1500	2000
T3.94×1.78×2	3.94±0.15	1.78±0.15	2.00±0.15	3.95	2.05	8.10	16.60	0.08	1400	1700	2100	2400	3200
T3.94×2.29×0.76	3.94±0.15	2.29±0.15	0.76±0.15	15.20	0.61	9.32	5.70	0.03	350	450	540	620	820
T3.94×2.29×0.86	3.94±0.15	2.29±0.15	0.86±0.15	13.50	0.69	9.32	6.45	0.03	400	510	610	700	930
T3.94×2.29×1	3.94±0.15	2.29±0.15	1.00±0.15	11.60	0.81	9.32	7.50	0.04	470	600	710	810	1100
T3.94×2.29×1.27	3.94±0.15	2.29±0.15	1.27±0.15	9.11	1.02	9.32	9.53	0.05	600	760	900	1000	1400
T3.94×2.29×1.52	3.94±0.15	2.29±0.15	1.52±0.15	7.61	1.22	9.32	11.40	0.05	710	910	1100	1200	1600
T3.94×2.29×1.65	3.94±0.15	2.29±0.15	1.65±0.15	7.01	1.33	9.32	12.40	0.06	770	1000	1200	1300	1800
T3.94×2.29×1.78	3.94±0.15	2.29±0.15	1.78±0.15	6.50	1.43	9.32	13.40	0.06	830	1100	1300	1400	1900
T3.94×2.29×2	3.94±0.15	2.29±0.15	2.00±0.15	5.79	1.61	9.32	15.0	0.08	930	1200	1400	1600	2200
T3.94×2.29×2.54	3.94±0.15	2.29±0.15	2.54±0.15	4.56	2.04	9.32	19.10	0.09	1200	1500	1800	2100	2800
T4×2×0.76	4.00±0.15	2.00±0.15	0.76±0.15	11.90	0.73	8.71	6.36	0.03	450	580	680	790	1100
T4×2×0.86	4.00±0.15	2.00±0.15	0.86±0.15	10.50	0.83	8.71	7.19	0.03	510	660	770	890	1200
T4×2×1	4.0±0.3	2.0±0.2	1.00±0.15	9.06	0.96	8.71	8.37	0.04	600	760	900	1000	1400
T4×2×1.27	4.00±0.15	2.00±0.15	1.27±0.15	7.13	1.22	8.71	10.60	0.05	760	970	1100	1300	1800

# Mn-Zn Ferrite T Cores



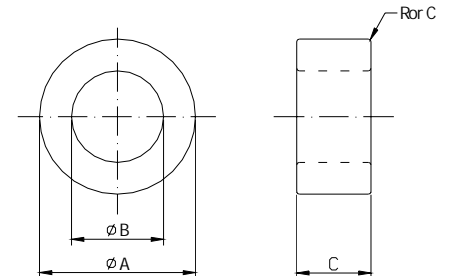
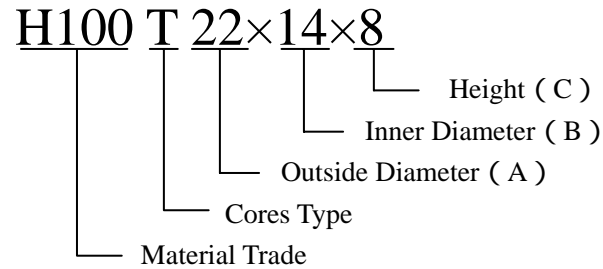
Ordering code	Dimensions (mm)			Effective Parameter					AL (±25%) (1kHz.50mV.HP4284A)								
	ΦA	ΦB	C	Cl(mm <sup>-1</sup> )	Ae(mm <sup>2</sup> )	Le(mm)	Ve(mm <sup>3</sup> )	We(g)	PB32	PL30	PL40	PL44	H043	H055	H065	H075	H100
T4×2×1.52	4.00±0.15	2.00±0.15	1.52±0.15	5.96	1.46	8.71	12.70	0.06	670	530	480	420	950	1200	1400	1600	2100
T4×2×2	4.0±0.3	2.0±0.2	2.0±0.2	4.53	1.92	8.71	16.70	0.08	890	690	640	550	1200	1500	1800	2100	2800
T4.83×2.29×1.0	4.83±0.15	2.29±0.15	1.00±0.15	8.41	1.21	10.20	12.40	0.06	480	370	340	300	640	820	970	1100	1500
T4.83×2.29×1.27	4.83±0.15	2.29±0.15	1.27±0.15	6.63	1.54	10.20	15.70	0.08	610	470	440	380	820	1000	1200	1400	1900
T4.83×2.29×2.54	4.83±0.15	2.29±0.15	2.54±0.15	3.31	3.08	10.20	31.40	0.15	1200	950	870	760	1600	2100	2500	2800	3800
T5×3×2	5.0±0.3	3.0±0.3	2.0±0.2	6.15	2.0	12.0	23.5	0.1	650	500	460	410	880	1100	1300	1500	2000
T6×3×2	6.0±0.3	3.0±0.3	2.0±0.2	4.53	3.0	13.1	37.6	0.2	890	700	640	550	1200	1500	1800	2100	2800
T6×3×3	6.0±0.3	3.0±0.3	3.0±0.2	3.02	4.3	13.1	56.5	0.3	1300	1100	970	830	1800	2250	2700	3150	4200
T7×4×3	7.0±0.3	4.0±0.3	3.0±0.2	3.74	4.5	16.4	71.9	0.3	1100	830	770	670	1400	1800	2200	2500	3350
T8×5×3	8.0±0.3	5.0±0.3	3.0±0.2	4.45	4.4	19.7	86.9	0.4	900	700	640	560	1200	1600	1800	2100	2800
T9×5×3	9.0±0.3	5.0±0.3	3.0±0.2	3.56	5.8	20.8	121.0	0.6	1100	900	820	710	1500	1900	2300	2600	3500
T10×6×3	10.0±0.3	6.0±0.3	3.0±0.2	4.10	5.9	24.1	141.0	0.7	980	770	700	610	1300	1700	2000	2300	3050
T10×6×5	10.0±0.3	6.0±0.3	5.0±0.3	2.46	9.8	24.1	235.0	1.1	1600	1270	1200	1000	2200	2800	3300	3800	5100
T12×6×4	12.0±0.4	6.0±0.3	4.0±0.2	2.27	11.5	26.1	301.0	1.4	1800	1400	1300	1100	2400	3000	3600	4200	5600
T12.7×7.8×5	12.7±0.4	7.8±0.3	5.0±0.3	2.58	12.0	30.9	372.0	1.8	1600	1200	1100	970	2100	2700	3200	3700	4900
T12.7×7.8×6.35	12.7±0.4	7.8±0.3	6.35±0.30	2.03	15.3	30.9	472.0	2.3	2000	1500	1400	1300	2700	3300	4000	4500	6000

# Mn-Zn Ferrite T Cores



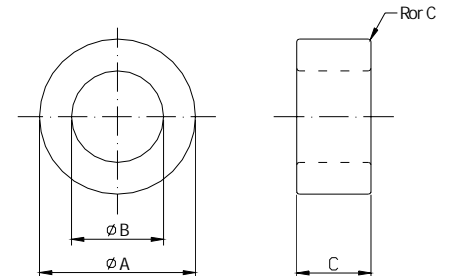
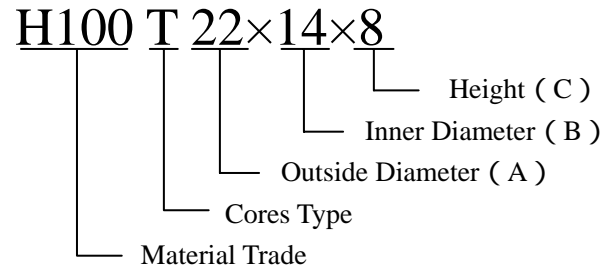
Ordering code	Dimensions (mm)			Effective Parameter					AL (±25%) (1kHz.50mV.HP4284A)							
	ΦA	ΦB	C	Cl(mm <sup>-1</sup> )	Ae(mm <sup>2</sup> )	Le(mm)	Ve(mm <sup>3</sup> )	We(g)	PL30	PL40	PL44	H043	H055	H065	H075	H100
T14×8×5	14.0±0.4	8.0±0.3	5.0±0.3	2.24	14.6	32.8	479.0	2.4	1400	1300	1100	2400	3100	3600	4200	5600
T14×8×7	14.0±0.4	8.0±0.3	7.0±0.3	1.60	20.5	32.8	671.0	3.4	2000	1800	1600	3400	4300	5100	5900	7800
T14×9×5	14.0±0.4	9.0±0.3	5.0±0.3	2.84	12.3	35.0	430.0	2.2	1100	1000	880	1900	2400	2900	3300	4400
T16×9.5×5	16.0±0.4	9.5±0.3	5.0±0.3	2.41	15.9	38.3	608.0	2.9	1300	1200	1000	2200	2900	3400	3900	5200
T16×9.5×6.35	16.0±0.4	9.5±0.3	6.35±0.30	1.90	20.2	38.3	772.0	3.7	1700	1500	1300	2800	3500	4300	5000	6600
T16×9.5×8	16.0±0.4	9.5±0.3	8.0±0.3	1.51	25.4	38.3	973.0	4.7	2100	1900	1700	3600	4600	5400	6300	8350
T16×9.5×10	16.0±0.4	9.5±0.3	10.0±0.3	1.20	31.8	38.3	1220	5.9	2600	2400	2100	4500	5700	6800	7800	10400
T16×9.5×12.7	16.0±0.4	9.5±0.3	12.7±0.3	0.95	40.4	38.3	1540	7.4	3300	3000	2600	5700	7300	8600	9900	13200
T16×10×5	16.0±0.4	10.0±0.3	5.0±0.3	2.67	14.7	39.4	580.0	2.8	1200	1100	940	2000	2600	3100	3500	4700
T17.5×9.5×8	17.5±0.4	9.5±0.3	8.0±0.3	1.28	31.0	39.9	1240	6.0	2400	2200	2000	4200	5400	6400	7300	9800
T17.5×9.5×10	17.5±0.4	9.5±0.3	10.0±0.3	1.03	38.8	39.9	1550	7.4	3100	2800	2400	5300	6700	7900	9200	12200
T18×10×6.35	18.0±0.4	10.0±0.3	6.35±0.30	1.68	24.7	41.5	1020	5.3	1900	1700	1500	3200	4100	4900	5600	7500
T18×10×7	18.0±0.4	10.0±0.3	7.0±0.3	1.53	27.2	41.5	1130	5.4	2100	1900	1600	3500	4200	5300	6200	8200
T18×10×8	18.0±0.4	10.0±0.3	8.0±0.3	1.34	31.1	41.5	1290	6.7	2400	2200	1900	4000	5200	6100	7100	9400
T18×10×10	18.0±0.4	10.0±0.3	10.0±0.3	1.07	38.9	41.5	1610	8.3	2600	2400	2400	5100	6500	7600	8800	11800
T18×12×8	18.0±0.4	12.0±0.4	8.0±0.3	1.94	23.7	45.8	1090	5.3	1600	1500	1300	2800	3600	4200	4900	6500min
T20×10×6.35	20.0±0.4	10.0±0.3	6.35±0.30	1.43	30.5	43.5	1330	6.4	2100	2000	1800	3800	4800	5700	6600	8800

# Mn-Zn Ferrite T Cores



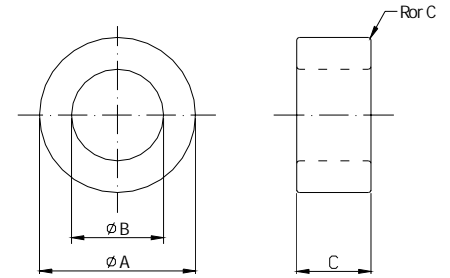
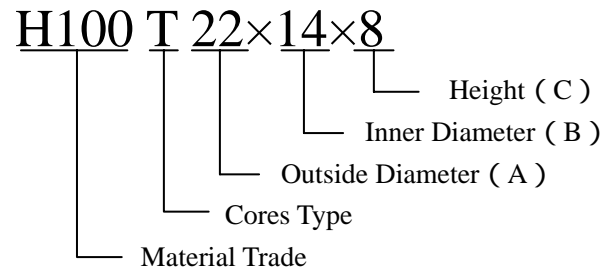
Ordering code	Dimensions (mm)			Effective Parameter					AL ( $\pm 25\%$ ) (1kHz.50mV.HP4284A)							
	$\Phi A$	$\Phi B$	C	C1(mm <sup>-1</sup> )	Ae(mm <sup>2</sup> )	Le(mm)	Ve(mm <sup>3</sup> )	We(g)	PL30	PL40	PL44	H043	H055	H065	H075	H100
T20×10×8	20.0±0.4	10.0±0.3	8.0±0.3	1.13	38.4	43.5	1670	8.0	2800	2600	2200	4800	6100	7200	8300	11100
T20×10×10	20.0±0.4	10.0±0.3	10.0±0.3	0.91	48.0	43.5	2090	10.0	3500	3200	2800	6000	7600	9000	10400	13900
T20×10×12.7	20.0±0.4	10.0±0.3	12.7±0.3	0.71	61.0	43.5	2660	12.8	4400	4000	3500	7600	9700	11400	13200	17600
T20×12×8	20.0±0.4	12.0±0.4	8.0±0.3	1.54	31.3	48.1	1510	7.4	2600	2300	2000	4400	5600	6600	7700	10200
T20×12×10	20.0±0.4	12.0±0.4	10.0±0.3	1.23	39.1	48.1	1880	9.5	2600	2300	2000	4400	5600	6600	7700	10200
T20×12×12.7	20.0±0.4	12.0±0.4	12.7±0.3	0.97	49.7	48.1	2390	12.0	3200	3000	2600	5600	7100	8400	9700	13000
T22×14×6.35	22.0±0.4	14.0±0.4	6.35±0.30	2.19	25.0	54.6	1360	6.7	1400	1300	1100	2500	3150	3700	4300	5700
T22×14×7	22.0±0.4	14.0±0.4	7.0±0.3	1.98	27.5	54.6	1500	7.4	1600	1500	1300	2700	3500	4100	4700	6000min
T22×14×8	22.0±0.4	14.0±0.4	8.0±0.3	1.74	31.5	54.6	1720	8.5	1800	1700	1400	3100	4000	4700	5400	7200
T22×14×10	22.0±0.4	14.0±0.4	10.0±0.3	1.39	39.3	54.6	2150	10.6	2300	2100	1800	3900	5000	5900	6800	9000
T25×15×8	25.0±0.4	15.0±0.4	8.0±0.3	1.54	39.1	60.1	2350	11.7	2000	1900	1600	3500	4500	5300	6100	8200
T25×15×10	25.0±0.4	15.0±0.4	10.0±0.3	1.23	48.9	60.1	2940	14.6	2600	2300	2000	4400	5600	6600	7700	10200
T25×15×12.7	25.0±0.4	15.0±0.4	12.7±0.3	0.97	62.1	60.1	3740	18.6	3200	3000	2600	5600	7100	8400	9700	13000
T25×15×15	25.0±0.4	15.0±0.4	15.0±0.4	0.82	73.4	60.1	4410	21.2	3800	3500	3100	6600	8400	10000	11500	15300
T28×16×6.35	28.0±0.4	16.0±0.4	6.35±0.30	1.77	37.1	65.6	2440	11.7	1800	1600	1400	3100	3900	4600	5300	7100
T28×16×7	28.0±0.4	16.0±0.4	7.0±0.3	1.60	40.9	65.6	2680	13.6	2000	1800	1600	3400	4300	5100	5900	7800
T28×16×8	28.0±0.4	16.0±0.4	8.0±0.3	1.40	46.8	65.6	3070	14.7	2220	2100	1800	3900	4900	5800	6700	9000

# Mn-Zn Ferrite T Cores



Ordering code	Dimensions (mm)			Effective Parameter					AL (±25%) (1kHz.50mV.HP4284A)							
	ΦA	ΦB	C	Cl(mm <sup>-1</sup> )	Ae(mm <sup>2</sup> )	Le(mm)	Ve(mm <sup>3</sup> )	We(g)	PL30	PL40	PL44	H043	H055	H065	H075	H100
T28×16×10	28.0±0.4	16.0±0.4	10.0±0.3	1.12	58.5	65.6	3830	20.0	2800	2600	2200	4800	6200	7300	8300	11200
T28×16×12.7	28.0±0.4	16.0±0.4	12.7±0.3	0.88	74.2	65.6	4870	26.0	3600	3300	2800	6100	7800	9200	10800	14200
T29×19×12.7	29.0±0.4	19.0±0.4	12.7±0.3	1.17	62.6	73.2	4580	22.0	2700	2500	2100	4600	5900	7000	8100	10700
T31×19×7	31.0±0.5	19.0±0.5	7.0±0.3	1.83	41.2	75.4	3110	14.9	1700	1600	1400	2900	3780	4400	5160	6900
T31×19×10	31.0±0.5	19.0±0.5	10.0±0.3	1.28	58.8	75.4	4440	21.3	2400	2300	2000	4200	5500	6400	7300	9800
T31×19×13	31.0±0.5	19.0±0.5	13.0±0.3	0.99	76.5	75.4	5770	29.0	3200	2900	2500	5500	7000	8300	9500	12700
T31×19×15	31.0±0.5	19.0±0.5	15.0±0.4	0.86	88.2	75.4	6660	32.0	3700	3400	2900	6300	8100	9500	11000	14700
T36×23×15.1	36.0±0.8	23.0±0.5	15.1±0.4	0.93	96.5	89.6	8650	41.5	3400	3100	2700	5800	7400	8800	10100	13500
T38×19×13	38.0±0.8	19.0±0.5	13.0±0.4	0.70	119.0	82.7	9810	47.1	4500	4100	3600	7700	9900	11700	13500	18000
T38×23×15.1	38.0±0.8	23.0±0.5	15.1±0.4	0.83	111.0	91.9	10200	49.0	3800	3500	3000	6500	8300	9900	11400	15200
T40×24×16	40.0±1.0	24.0±0.5	16.0±0.4	0.77	125.0	96.2	12100	61.0	4100	3800	3300	7000	9000	10600	12300	16400
T44.5×30×13	44.5±1.0	30.0±0.8	13.0±0.3	1.23	93.0	114.0	10600	53.0	2600	2400	2100	4400	5600	6700	7700	10300
T48×30×15	48.0±1.0	30.0±0.8	15.0±0.4	0.89	133.0	118.0	15600	78.0	3500	3200	2800	6100	7800	9200	10600	14100
T48×30×20	48.0±1.0	30.0±0.8	20.0±0.5	0.67	177.0	118.0	20900	100.3	4700	4300	3800	8100	10300	12200	14100	18800
T56×26×20	56.0± <sup>1.0</sup> <sub>1.5</sub>	26.0± <sup>0</sup> <sub>1.5</sub>	20.0±0.5	0.41	286.0	117.0	33400	160.3	7700	7060	6140	13090	16940	20020	23100	30800
T60×40×12	60.0±1.5	40.0±1.0	12.0±0.3	1.29	118.0	153.0	18100	86.9	2400	2200	1900	4200	5400	6300	7300	9750
T60×40×20	60.0±1.5	40.0±1.0	20.0±0.5	0.77	197.0	153.0	30100	144.5	4100	3700	3200	6900	8900	10500	12200	16200

# Mn-Zn Ferrite T Cores



Ordering code	Dimensions (mm)			Effective Parameter					AL (±25%) (1kHz.50mV.HP4284A)	
	ΦA	ΦB	C	Cl(mm <sup>-1</sup> )	Ae(mm <sup>2</sup> )	Le(mm)	Ve(mm <sup>3</sup> )	We(g)	PL40	PL44
T80×40×20	80.0±2.5	40.0±2.0	20.0±1.2	0.47	400	188.4	75360	373	6380	5550
T100×50×20	100.0±3.0	50.0±2.5	20.0±1.5	0.47	500	235.5	117750	520	6380	5550
T102×65×20	102.0±3.0	65.0±2.5	20.0±1.5	0.71	370	262.2	97014	460	4200	3650
T124×60×40	122.5±2.5	60.0±2.0	40.0±2.5	0.23	1280	288.9	369766	1520	12800	11100