

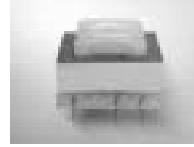
# 工頻變壓器 Power Transformer

Application Frequency 應用頻率: 50/60 Hz

Model 型號: PCB mounting & Lead wired 引線及插針

Power Range 輸出功率範圍: 0.5W to 125W

Regular designed Temperature Rise 正常設計溫升: 50°C



Our Materials 我們所用的主要原料 :

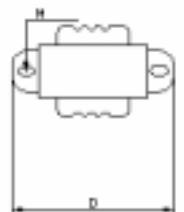
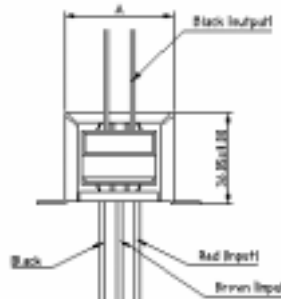
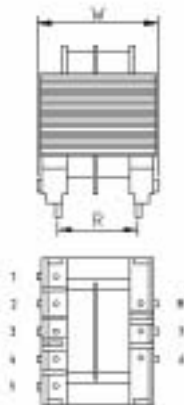
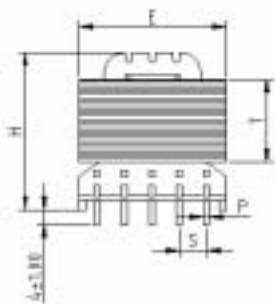
Item	Name	Description	UL File #
1	Lamination Core (EI) 鐵芯	DW360H50 1.60T/Z11 1.80T	N/A
2	Enamelled Copper Wires 漆包線	2UEW-F 155°C	E158025 ( S )
3	Bobbin ( Former ) 骨架	Nylon 66/PBT	E59481 ( S )
4	Insulation Tape 絕緣膠紙	PET PT-25 0.025mm	E117836 ( S )
5	Varnish 絕緣油 (Vacuum Impregnation)	Air Drying Insulating Varnish 8562/C (Better heat transfer and insulation)	E200154

\*\*Higher class of insulation strength will available upon request.

\*\*我們可根據客戶之要求提高絕緣等級。

Our basic Hi-Pot testing standard 我們基本的耐壓測試標準(IEC)

Item 項目	Applied Voltage ( V ) 工作電壓					
	50	150	250	440	690	1000
Pri & Sec	500	2000	3500	4200	5000	5500
Basic Insulation	250	1000	1750	2100	2500	2750
Enhancement	500	2000	3500	4200	5000	5500



PCB Mounting Type

Lead Wired Type

Parts with other specifications may available, please contact our sales engineer for further information.

如需要其它參數之此類器件，請與敝司的銷售工程師聯絡索取詳細資料。 E-mail: jrl@pe-coils.com

## Ordering Code

PT-EIXXXXX-I/PXXX-O/PXXX-XXW

1. PT: Power Transformer
2. PT-EIXXXXX: Shape and Size of the Cores
3. PT-EIXXXXX-I/PXXX: Input AC Voltage
4. PT-EIXXXXX-I/PXXX-O/PXXX: Output AC Voltage
5. PT-EIXXXXX-I/PXXX-O/PXXX-XXW: Output Power in Watt

**Power=Output Voltage X Current Loaded**

鐵芯型號 X 疊厚(mm) Core Size X Stack	額定功率(W) Rated Power	U/% Reg.	鐵芯型號 X 疊厚(mm) Core Size X Stack	額定功率(W) Rated Power	U/% Reg.
EI30/10X10	0.49	30	EI48/16X20	11.20	30
EI30/10X12.5	0.74		EI48/16X24	15.40	
EI30/10x16	1.13		EI48/16X28	19.30	28.5
EI30/10X20	1.64		EI48/16X32	22.90	26.3
EI35/9.6X10	1.09	30	EI54/18X18	16.70	30
EI35/9.6X12.5	1.52		EI54/18X22.5	21.70	26.1
EI35/9.6X15	2.11		EI54/18X27	27.00	23.4
EI35/9.6X18	2.94		EI54/18X31.5	32.20	21.4
EI35/9.6X20	3.55	30	EI54/18X36	37.90	19.6
EI38/12.8X13	1.92		EI57/19X19	20.40	27.1
EI38/12.8X16	3.06		EI57/19X24	26.80	23.3
EI38/12.8X20	4.54		EI57/19X28.5	32.50	21
EI38/12.8X26	6.95	30	EI57/19X33.5	39.10	18.9
EI41/13X13	3.19		EI57/19X38	45.20	17.6
EI41/13X15	4.18		EI66/22X22	35.50	21.3
EI41/13X18	5.79		EI66/22X28	46.60	18.2
EI41/13X20	7.04	30	EI66/22X33	55.50	16.4
EI41/13X26	10.9		EI66/22X38	65.80	14.8
EI42/14X14	3.55		EI66/22X44	77.50	13.5
EI42/14X18	5.54		EI76/25X25	59.50	16.3
EI42/14X21	7.47	30	EI76/25X32	76.50	13.4
EI42/14X28	11.90		EI76/25X40	99.50	11.5
EI48/16X16	7.57		EI76/25X50	125.00	10

Please note: the practical sizes and output power may be different from above list.

請注意；變壓器之輸出功率於實際情況下或與本表有所差別

Parts with other specifications may available, please contact our sales engineer for further information.

如需要其它參數之此類器件，請與敝司的銷售工程師聯絡索取詳細資料。 E-mail: jrl@pe-coils.com

Some of our dimensions examples

<p><b>EI28-HJ</b></p>	<p><b>EI35-HJ</b></p>
<p><b>EI35-TF3502</b></p>	<p><b>EI35X13</b></p>
<p><b>EI41 A</b></p>	<p><b>EI41 B</b></p>

Parts with other specifications may available, please contact our sales engineer for further information.  
 如需要其它参数之此类器件，请与敝司的销售工程师联络索取详细资料。 E-mail: jrl@pe-coils.com

Other available PCB Mounting transformers ( CONTACT US FOR OTHER SIZES)

型號和疊厚 Model & Stack	尺寸 Dimensions in mm						針腳數量 Pins(Np/Ns)	備忘 Reference
	H	E	W	S(Np/Ns)	R	P		
EI35X14	30.7	35	33.2	6.35	29.8	0.80	8	JRLY322/C
EI41X20.5(Adaptor)	44.6	41	33	3.96	N/A	0.60	3/2	JRLY478/7
EI57X30	58.2	57	47.6	5/7.5	33.7	1.00	16	JRLY252/C
EI42X8.5	23.8	42.5	34	5	25	0.60	14	JRLU4202/3
EI48X20	45.1	48.5	39.5	7.5/5	30	1.20	4/7	JRLE4820
EI48X32	57.3	48.5	39.5	7.5/5	30	1.20	4/7	JRLE4832
EI54X23	47.2	54	48	7/5.5	35	1.20	5/6	JRLE5423
EI54X30	56	54	46.2	7.5/5	35	1.20	5/9	JRLE5430
EI57X25	50.6	57	50	7.5/6	37.5	1.20	4/7	JRLE5725
EI57X30	56.3	57	50	7.5/5	37.5	1.20	5/9	JRLE5730
EI57X40	58.4	57	50	7.5/5	38	1.20	4/9	JRLE5740
EI66X60	80	66	55	7.5/6	48.8	1.20	6/9	JRLE6660
EI76X50	86.4	76	60	7.5/7	50	1.20	6/9	JRLE7650

**We also manufacturing AC-DC  
Adaptors & Switching Mode Power  
Transformer ( SMPT )**

**我們同時制造交直流電源適變器及  
開關電源變壓器。**



Available power:

Model 型號	Power Range 最大功率	Case Dimensions 外殼尺寸 (L X W X H) mm
EI35	3W	60X43X43
EI41	7W	67X49X44
EI48	23W	81X56.5X55 (Grounded)
EI57	39W	84X64X57.5 Extended Wire Plug

Parts with other specifications may available, please contact our sales engineer for further information.  
如需要其它參數之此類器件，請與敝司的銷售工程師聯絡索取詳細資料。 E-mail: jrl@pe-coils.com